



ARTS

RetailWeek

Technology

Retail

SUMMIT

Application Integration in Retail Using IXRetail Standards

Real, Ready and Proven

Presented by
Jerry Rightmer, SVP and CTO
360Commerce

Session Agenda

- Who is 360Commerce?
- What is IXRetail?
- IXRetail Implementation Models
- Published Schema Overview
- Implementation Considerations
- Contact Information



About 360Commerce

- Established in 1992 with headquarters in Austin, Texas
- 12 years experience with leading retailers
- Providers of retail optimization solutions including:
 - **360Store**
 - **360Enterprise**

360Commerce has the largest customer base in the Java store solutions market.



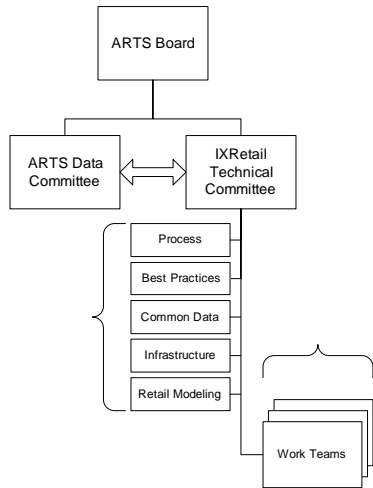
What is ARTS?

- Standards division of the NRF
 - Members (161) are retailers and vendors
 - 40% international
- Mission
 - To enable the low cost, rapid deployment of technology in retail by reducing integration efforts through platform independent, vendor neutral standards.
- Committees
 - Relational Data Model
 - Unified POS (POS Device Integration Standard)
 - IXRetail (International XML for Retail)
 - XML Dictionary
 - XML Schemas & Message Sets
 - Standard RFPs (Request for Proposals)

What is IXRetail?

- Based on ARTS Data Model
 - XML Dictionary
 - XML Schemas & Message Sets
- Enables application to application integration within the retail enterprise
 - Developed by retail industry and XML experts
 - Complies with W3C guidelines
 - OS, infrastructure, programming language neutral
 - Incorporate EAN/UCC, ISO and other existing standards
- XML best practices & extension guidelines

IXRetail Organization and Output



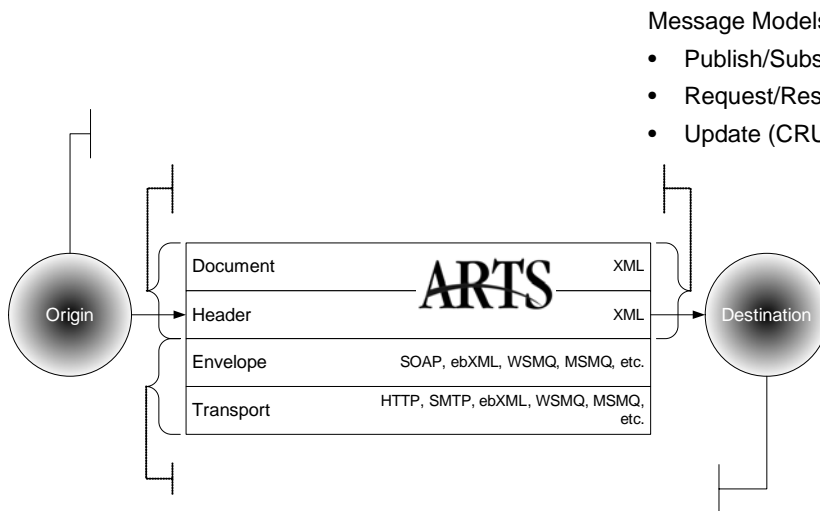
Work Teams:

- Customer
- Digital Receipt
- POSlog
- Price
- Digital Asset Management
- Remote Equipment Monitoring and Control
- Stored Value
- Workforce Management
- Item
- Inventory

Specification Content:

- Charter
- Technical Specification
- Domain Model
- Schema

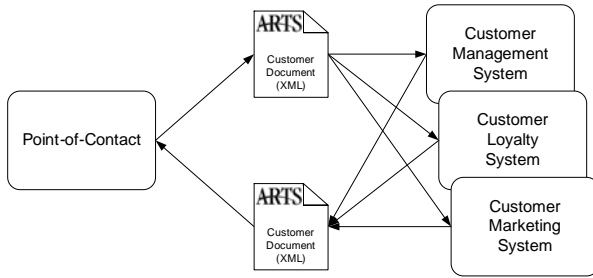
Implementation Models



Message Models:

- Publish/Subscribe
- Request/Response
- Update (CRUD)

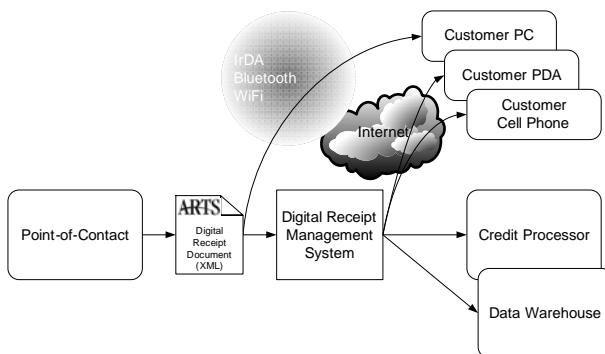
Customer
Version 2, Candidate Recommendation



Key Use Cases:

- Create, update, retrieve, lookup, delete and authenticate customer record
- Add, update, remove relationships
- Merge customer information
- Send offer, up-sell or coupon to customer
- Redeem, return offer
- Loyalty program enrollment, update, withdrawal, inquiry, adjustment

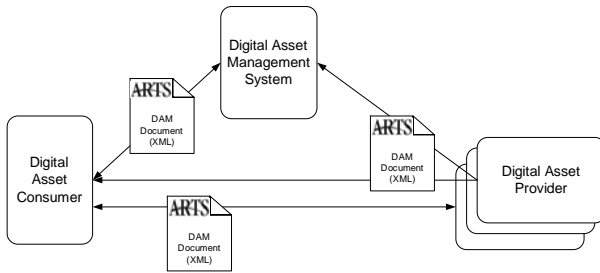
Digital Receipt
Version 1, Candidate Recommendation



Key Use Cases:

- Consumer view/promotion delivery
- Proximity electronic payment receipts
- Marketing and merchandising
- Proof of purchase
- Credit card dispute resolution
- Automated Input to Financial Applications

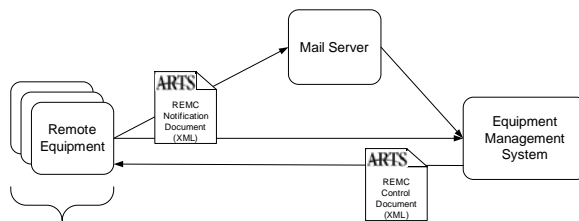
Digital Asset Management
Version 1, Candidate Recommendation



Key Use Cases:

- Locate digital assets
 - Locate digital asset by GUID
 - Request detailed asset data
 - Request asset status
- Acquire digital assets
 - Request new asset
 - Request existing asset
- Manage digital assets
 - Publish deactivation notice
 - Publish asset update notice

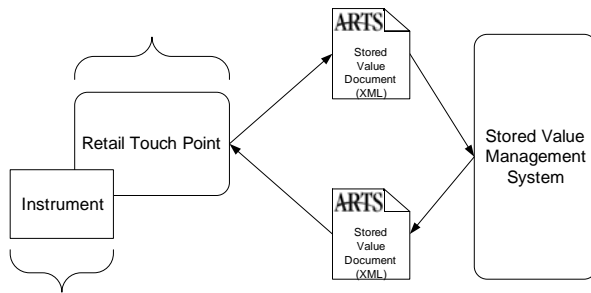
Remote Equipment Monitoring & Control
Version 1, Candidate Recommendation



Key Use Cases:

- Configuration reporting and management
- Consumption reporting
- Repetitive use reporting
- Continuous operations reporting
- Constraint conformance reporting
- State change reporting
- Alarm reporting
- Diagnostic reporting

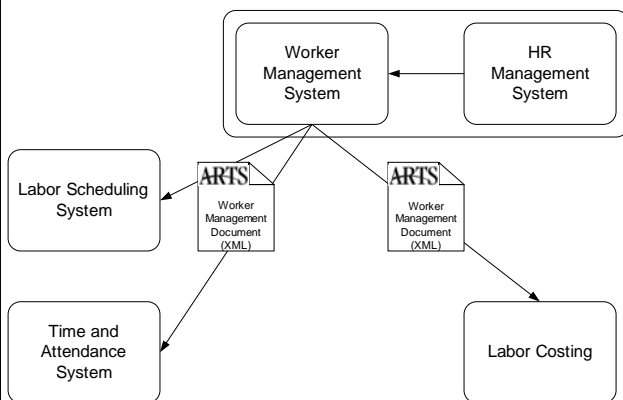
Stored Value
Version 1, Candidate Recommendation



Key Use Cases:

- Issue instrument
- Tender instrument
- Instrument status inquiry
- Transaction reversal
- Deactivate instrument
- Increase account balance
- Deactivate account
- Void request
- Replace instrument
- Preauthorize instrument tender

Worker Management
Version 1, Candidate Recommendation

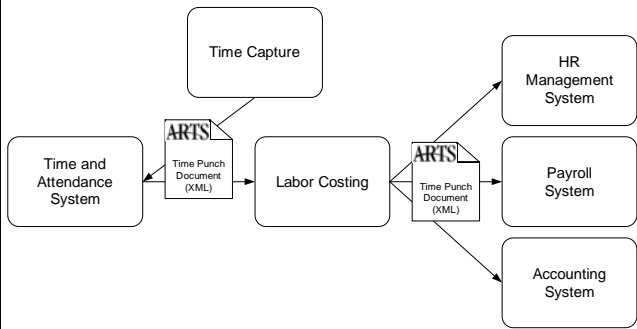


Key Use Cases:

- Create worker information
 - Personal data
 - Payroll data
 - Scheduling data
- Request worker information
 - Personal data
 - Payroll data
 - Scheduling data
 - Security data
- Report worker status
 - Termination
 - Re-hire
- Send/receive worker information to HR

Time Punch

Version 1, Last Call Working Draft



Key Use Cases:

- Punch in/out
 - Start on-time/late
 - Break
 - Overtime
 - Overlap (shift/day)
 - Multi-site/job
- Punch maintenance
 - Missed punch
 - Adjustment
 - Void
 - Update POS
- Time punch output
 - Manager audit
 - Batch transmit

Pending Specifications

Coming Soon...

Item Specification

Scope includes the definition of item information published by a item/merchandise management system.

Inventory Specification

Scope encompasses the interactions between an inventory management system and applications that affect inventory balances including POS.

Implementation Considerations

- IXRetail dictionary alignment
- Use and extend individual:
 - IXRetail schemas
 - IXRetail message sets
- IXRetail XML best practices
- Opportunity to influence future candidate recommendations
- Standard RFPs

Support ARTS

- Request standards-based solutions
- Join ARTS
 - Dues are \$1,500 to \$5,000
- Attend Committee Meetings
 - London, October
 - Atlanta, November
 - New York, January
- Monitor and Comment
- www.nrf-arts.org